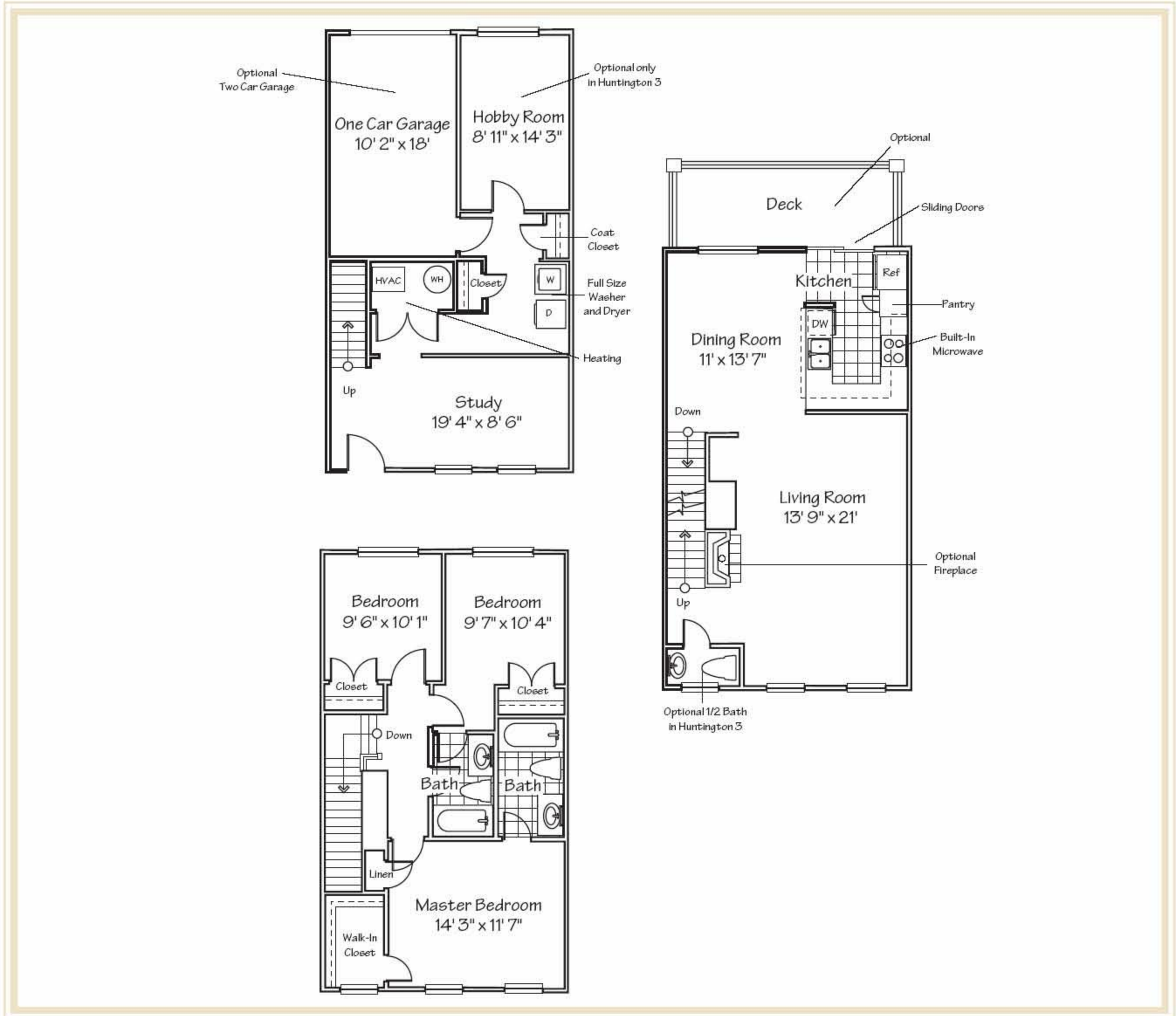


# THE FENWICK

The Residences  
at King Farm

3 STORY, 3 BEDROOM, 2 BATH 1552 Approx. square feet



## SPECIAL FEATURES

This home features optional hardwood floors, spacious study and large main level living room.

RENT \$ \_\_\_\_\_

APARTMENT NO. \_\_\_\_\_



THE RESIDENCES AT KING FARM

Ph 301.519.2806 Fx 301.519.2809